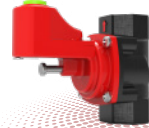
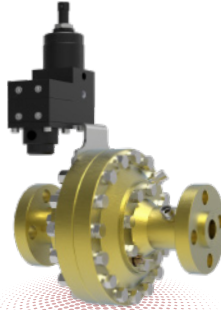




TARGAZ



FIYAT LİSTESİ 2024 / HAZİRAN



TDV-T								
ÜRÜN	SERİ NO	BOYUT	BAĞLANTI	ÇALIŞMA BASINCI	AĞIRLIK	KOLİ ADEDİ	UZUNLUK-YÜKSEKLİK GENİŞLİK (mm)	FİYAT
TDV-T 25	MM.19.10	DN 25 (1")	DIŞLI	0-5 BAR	0,5 kg	84	96 x 123 x 87	1300 ₺
TDV-T 32	MM.19.11	DN 32 (1 1/4")	DIŞLI	0-5 BAR	0,7 kg	65	96 x 133 x 100	1300 ₺
TDV-T 40	MM.19.12	DN 40 (1 1/2")	DIŞLI	0-5 BAR	0,7 kg	65	96 x 133 x 100	1300 ₺
TDV-T 50	MM.19.13	DN 50 (2")	DIŞLI	0-5 BAR	0,7 kg	65	96 x 133 x 100	1300 ₺

DIKEY VE YATAY OLARAK MONTE EDİLEBİLİR.



TDV-T								
ÜRÜN	SERİ NO	BOYUT	BAĞLANTI	ÇALIŞMA BASINCI	AĞIRLIK	KOLİ ADEDİ	UZUNLUK-YÜKSEKLİK GENİŞLİK (mm)	FİYAT
TDV-T 65	MM.19.14	DN 65 (2 1/2")	FLANŞLI	0-5 BAR	7 kg	1	305 x 260 x 204	7500 ₺
TDV-T 80	MM.19.15	DN 80 (3")	FLANŞLI	0-5 BAR	7 kg	1	305 x 260 x 204	9150 ₺
TDV-T 100	MM.19.16	DN 100 (4")	FLANŞLI	0-5 BAR	8 kg	1	305 x 260 x 204	17500 ₺

DIKEY VE YATAY OLARAK MONTE EDİLEBİLİR.



TDV-T								
ÜRÜN	SERİ NO	BOYUT	BAĞLANTI	ÇALIŞMA BASINCI	AĞIRLIK	KOLİ ADEDİ	UZUNLUK-YÜKSEKLİK GENİŞLİK (mm)	FİYAT
TDV-T 125	MM.19.17	DN 125 (5")	FLANŞLI	0-5 BAR	21 kg	1	379 x 393 x 280	53000 ₺
TDV-T 150	MM.19.18	DN 150 (6")	FLANŞLI	0-5 BAR	21 kg	1	379 x 413 x 280	57000 ₺
TDV-T 200	MM.19.19	DN 200 (8")	FLANŞLI	0-5 BAR	36 kg	1	500 x 482 x 341	112000 ₺
TDV-T 250	MM.19.20	DN 250 (10")	FLANŞLI	0-5 BAR	55 kg	1	600 x 567 x 391	150000 ₺
TDV-T 300	MM.19.21	DN 300 (12")	FLANŞLI	0-5 BAR	58 kg	1	600 x 595 x 391	194000 ₺

DIKEY VE YATAY OLARAK MONTE EDİLEBİLİR.

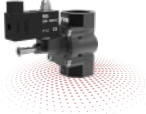
ESV - SELONÖİD VANALAR (Pmax:1 bar)



TARGAZ



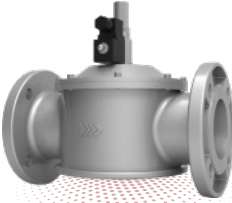
2



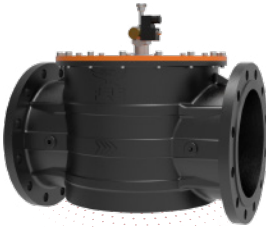
ESV							(220-12 VOLT)	Pmax: 1 bar
ÜRÜN	SERİ NO	BOYUT	BAĞLANTI	AĞIRLIK	KOLİ ADEDİ	UZUNLUK - YÜKSEKLİK GENİŞLİK (mm)	FIYAT	
ESV 15	MM.02.10	DN 15 (1/2")	DIŞLI	0,3 kg	84	78 x 98 x 80	875 ₺	
ESV 20	MM.02.11	DN 20 (3/4")	DIŞLI	0,3 kg	60	78 x 98 x 80	875 ₺	
ESV 25	MM.02.12	DN 25 (1")	DIŞLI	0,4 kg	60	78 x 98 x 80	875 ₺	



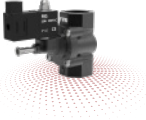
ESV							(220-12 VOLT)	Pmax: 1 bar
ÜRÜN	SERİ NO	BOYUT	BAĞLANTI	AĞIRLIK	KOLİ ADEDİ	UZUNLUK - YÜKSEKLİK GENİŞLİK (mm)	FIYAT	
ESV 32	MM.02.13	DN 32 (1 1/4")	DIŞLI	0,8 kg	60	138 x 173 x 135	1375 ₺	
ESV 40	MM.02.14	DN 40 (1 1/2")	DIŞLI	0,8 kg	60	138 x 173 x 135	1375 ₺	
ESV 50	MM.02.15	DN 50 (2")	DIŞLI	0,8 kg	60	138 x 173 x 135	1375 ₺	



ESV							(220-12 VOLT)	Pmax: 1 bar
ÜRÜN	SERİ NO	BOYUT	BAĞLANTI	AĞIRLIK	KOLİ ADEDİ	UZUNLUK - YÜKSEKLİK GENİŞLİK (mm)	FIYAT	
ESV 65	MM.02.16	DN 65 (2 1/2")	FLANŞLI	7,5 kg	1	200 x 292 x 305	7500 ₺	
ESV 80	MM.02.17	DN 80 (3")	FLANŞLI	7 kg	1	200 x 300 x 305	9150 ₺	
ESV 100	MM.02.18	DN 100 (4")	FLANŞLI	8 kg	1	210 x 320 x 330	17500 ₺	



ESV							(220-12 VOLT)	Pmax: 1 bar
ÜRÜN	SERİ NO	BOYUT	BAĞLANTI	AĞIRLIK	KOLİ ADEDİ	UZUNLUK - YÜKSEKLİK GENİŞLİK (mm)	FIYAT	
ESV 125	MM.02.19	DN 125 (5")	FLANŞLI	21,5 kg	1	379 x 350 x 292	40000 ₺	
ESV 150	MM.02.20	DN 150 (6")	FLANŞLI	21,5 kg	1	379 x 370 x 292	47500 ₺	
ESV 200	MM.02.21	DN 200 (8")	FLANŞLI	29,5 kg	1	500 x 280 x 448	95000 ₺	
ESV 250	MM.02.22	DN 250 (10")	FLANŞLI	50 kg	1	600 x 555 x 450	150000 ₺	
ESV 300	MM.02.23	DN 300 (12")	FLANŞLI	52 kg	1	600 x 560 x 450	195000 ₺	



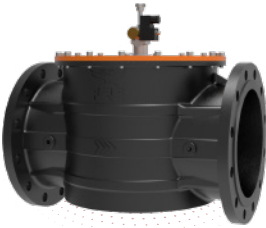
ESV							(220-12 VOLT)	Pmax: 6 bar
ÜRÜN	SERİ NO	BOYUT	BAĞLANTI	AĞIRLIK	KOLİ ADEDİ	UZUNLUK - YÜKSEKLİK GENİŞLİK (mm)	FIYAT	
ESV 15	MM.02.10	DN 15 (1/2")	DIŞLI	0,3 kg	84	78 x 98 x 80	2300 ₺	
ESV 20	MM.02.11	DN 20 (3/4")	DIŞLI	0,3 kg	60	78 x 98 x 80	2300 ₺	
ESV 25	MM.02.12	DN 25 (1")	DIŞLI	0,4 kg	60	78 x 98 x 80	2300 ₺	



ESV							(220-12 VOLT)	Pmax: 6 bar
ÜRÜN	SERİ NO	BOYUT	BAĞLANTI	AĞIRLIK	KOLİ ADEDİ	UZUNLUK - YÜKSEKLİK GENİŞLİK (mm)	FIYAT	
ESV 32	MM.02.13	DN 32 (1 1/4")	DIŞLI	0,8 kg	60	138 x 173 x 135	2550 ₺	
ESV 40	MM.02.14	DN 40 (1 1/2")	DIŞLI	0,8 kg	60	138 x 173 x 135	2800 ₺	
ESV 50	MM.02.15	DN 50 (2")	DIŞLI	0,8 kg	60	138 x 173 x 135	2800 ₺	



ESV							(220-12 VOLT)	Pmax: 6 bar
ÜRÜN	SERİ NO	BOYUT	BAĞLANTI	AĞIRLIK	KOLİ ADEDİ	UZUNLUK - YÜKSEKLİK GENİŞLİK (mm)	FIYAT	
ESV 65	MM.02.16	DN 65 (2 1/2")	FLANŞLI	7,5 kg	1	200 x 292 x 305	10500 ₺	
ESV 80	MM.02.17	DN 80 (3")	FLANŞLI	7 kg	1	200 x 300 x 305	13750 ₺	
ESV 100	MM.02.18	DN 100 (4")	FLANŞLI	8 kg	1	210 x 320 x 330	23000 ₺	



ESV							(220-12 VOLT)	Pmax: 6 bar
ÜRÜN	SERİ NO	BOYUT	BAĞLANTI	AĞIRLIK	KOLİ ADEDİ	UZUNLUK - YÜKSEKLİK GENİŞLİK (mm)	FIYAT	
ESV 125	MM.02.19	DN 125 (5")	FLANŞLI	21,5 kg	1	379 x 350 x 292	55000 ₺	
ESV 150	MM.02.20	DN 150 (6")	FLANŞLI	21,5 kg	1	379 x 370 x 292	67000 ₺	
ESV 200	MM.02.21	DN 200 (8")	FLANŞLI	29,5 kg	1	500 x 280 x 448	145000 ₺	
ESV 250	MM.02.22	DN 250 (10")	FLANŞLI	50 kg	1	600 x 555 x 450	220000 ₺	
ESV 300	MM.02.23	DN 300 (12")	FLANŞLI	52 kg	1	600 x 560 x 450	240000 ₺	

FLR - ALÜMİNYUM FİLTRE



TARGAZ

4



FLR							P _{max} : 600 mbar
ÜRÜN	SERİ NO	BOYUT	BAĞLANTI	AĞIRLIK	KOLİ ADEDİ	UZUNLUK - YÜKSEKLİK GENİŞLİK (mm)	FİYAT
FLR 15	MM.03.10	DN 15 (1/2")	DIŞLI	0,7 kg	60	122 x 70 x 110	675 ₺
FLR 20	MM.03.11	DN 20 (3/4")	DIŞLI	0,7 kg	60	122 x 70 x 110	675 ₺
FLR 25	MM.03.12	DN 25 (1")	DIŞLI	0,7 kg	60	122 x 70 x 110	675 ₺
FLR 32	MM.03.13	DN 32 (1 1/4")	DIŞLI	1,3 kg	30	160 x 90 x 145	1000 ₺
FLR 40	MM.03.14	DN 40 (1 1/2")	DIŞLI	1,2 kg	30	160 x 90 x 145	1000 ₺
FLR 50	MM.03.15	DN 50 (2")	DIŞLI	1,2 kg	30	160 x 90 x 145	1000 ₺



FLR							P _{max} : 6 bar
ÜRÜN	SERİ NO	BOYUT	BAĞLANTI	AĞIRLIK	KOLİ ADEDİ	UZUNLUK - YÜKSEKLİK GENİŞLİK (mm)	FİYAT
FLR 15	MM.03.10	DN 15 (1/2")	DIŞLI	-	-	-	
FLR 20	MM.03.11	DN 20 (3/4")	DIŞLI	-	-	-	
FLR 25	MM.03.12	DN 25 (1")	DIŞLI	0,7 kg	60	122 x 70 x 110	810 ₺
FLR 32	MM.03.13	DN 32 (1 1/4")	DIŞLI	1,3 kg	30	160 x 90 x 145	1425 ₺
FLR 40	MM.03.14	DN 40 (1 1/2")	DIŞLI	1,2 kg	30	160 x 90 x 145	1425 ₺
FLR 50	MM.03.15	DN 50 (2")	DIŞLI	1,2 kg	30	160 x 90 x 145	1425 ₺



FLR							P _{max} : 6 bar
ÜRÜN	SERİ NO	BOYUT	BAĞLANTI	AĞIRLIK	KOLİ ADEDİ	UZUNLUK - YÜKSEKLİK GENİŞLİK (mm)	FİYAT
FLR 65	MM.03.16	DN 65 (2 1/2")	FLANŞLI	7 kg	1	300 x 185 x 200	6600 ₺
FLR 80	MM.03.17	DN 80 (3")	FLANŞLI	7 kg	1	300 x 200 x 200	6750 ₺
FLR 100	MM.03.18	DN 100 (4")	FLANŞLI	10 kg	1	310 x 220 x 200	16750 ₺



FLR							P _{max} : 6 bar
ÜRÜN	SERİ NO	BOYUT	BAĞLANTI	AĞIRLIK	KOLİ ADEDİ	UZUNLUK - YÜKSEKLİK GENİŞLİK (mm)	FİYAT
FLR 125	MM.03.19	DN 125 (5")	FLANŞLI	20 kg	1	380 x 250 x 295	18000 ₺
FLR 150	MM.03.20	DN 150 (6")	FLANŞLI	20 kg	1	380 x 280 x 295	31250 ₺
FLR 200	MM.03.21	DN 200 (8")	FLANŞLI	32 kg	1	500 x 340 x 390	50000 ₺
FLR 250	MM.03.22	DN 250 (10")	FLANŞLI	50 kg	1	600 x 422 x 450	80000 ₺
FLR 300	MM.03.23	DN 300 (12")	FLANŞLI	55 kg	1	600 x 460 x 450	96000 ₺

MODEL	BAĞLANTI ÇAPI		MAX GİRİŞ BASINCI		UZUNLUK x GENİŞLİK		AĞIRLIK	KOLİ ADEDİ	FİYAT		
	DİŞLİ - DN 25(1") x DN 25(1")		5 BAR		295 mm x 233 mm						
FRG-YB 25	P_{out} / P_{in}		0,5	1	2	3	4	5			
MM.01.31.01.10	21 mbar	100	150	180	200	200	200	200	3,6 kg	12	5000 ₺
MM.01.31.01.20	50 mbar	100	150	200	225	250	250				
MM.01.31.01.30	100 mbar	80	120	200	250	300	300				
MM.01.31.01.40	300 mbar	60	110	200	250	400	400				

KAPASİTE TABLOSU (Sm³/h)



MODEL	BAĞLANTI ÇAPI		MAX GİRİŞ BASINCI		UZUNLUK x GENİŞLİK		AĞIRLIK	KOLİ ADEDİ	FİYAT		
	DİŞLİ - DN 32(1 1/4") x DN 32(1 1/4")		5 BAR		295 mm x 233 mm						
FRG-YB 32	P_{out} / P_{in}		0,5	1	2	3	4	5			
MM.01.32.01.10	21 mbar	270	430	450	450	450	450	450	3,6 kg	12	14500 ₺
MM.01.32.01.20	50 mbar	270	410	600	620	620	620				
MM.01.32.01.30	100 mbar	250	400	650	740	740	740				
MM.01.32.01.40	300 mbar	190	370	650	890	940	940				

KAPASİTE TABLOSU (Sm³/h)

MODEL	BAĞLANTI ÇAPI		MAX GİRİŞ BASINCI		UZUNLUK x GENİŞLİK		AĞIRLIK	KOLİ ADEDİ	FİYAT		
	DİŞLİ - DN 40(1 1/2") x DN 40(1 1/2")		5 BAR		295 mm x 233 mm						
FRG-YB 40	P_{out} / P_{in}		0,5	1	2	3	4	5			
MM.01.33.01.10	21 mbar	270	430	690	700	700	700	700	3,6 kg	12	14500 ₺
MM.01.33.01.20	50 mbar	270	430	700	860	870	890				
MM.01.33.01.30	100 mbar	260	420	690	950	1050	1070				
MM.01.33.01.40	300 mbar	190	380	670	940	1160	1380				

KAPASİTE TABLOSU (Sm³/h)

MODEL	BAĞLANTI ÇAPI		MAX GİRİŞ BASINCI		UZUNLUK x GENİŞLİK		AĞIRLIK	KOLİ ADEDİ	FİYAT		
	DİŞLİ - DN 50(2") x DN 50(2")		5 BAR		295 mm x 233 mm						
FRG-YB 50	P_{out} / P_{in}		0,5	1	2	3	4	5			
MM.01.34.01.10	21 mbar	300	460	750	990	1290	1500	1500	3,5 kg	12	15800 ₺
MM.01.34.01.20	50 mbar	300	460	750	1000	1300	1500				
MM.01.34.01.30	100 mbar	280	450	740	1000	1300	1500				
MM.01.34.01.40	300 mbar	210	390	700	960	1250	1500				

KAPASİTE TABLOSU (Sm³/h)



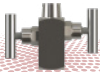
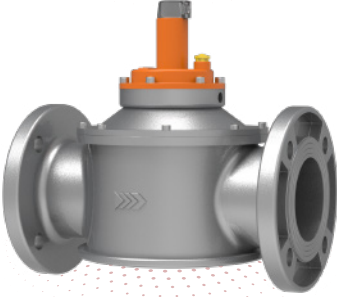
FRG							BAĞLANTI: DIŞLI		
ÜRÜN	SERİ NU	BOYUT	UZUNLUK GENİŞLİK(mm)	Pmax	Pout	AĞIRLIK	KOLİ ADEDİ	FİYAT	
FRG 15	MM.01.21.02	DN 15 (1/2")	137 x 122	1 bar	21-300 mbar	1,4 kg	30	2000 ₺	
FRG 20	MM.01.22.02	DN 20 (3/4")	157 x 148	1 bar	21-300 mbar	1,4 kg	30	2000 ₺	
FRG 25	MM.01.23.02	DN 25 (1")	157 x 148	1 bar	21-300 mbar	1,4 kg	30	2000 ₺	
FRG 32	MM.01.24.02	DN 32 (1 1/4")	192 x 233	1 bar	21-300 mbar	3,4 kg	12	4750 ₺	
FRG 40	MM.01.25.02	DN 40 (1 1/2")	192 x 233	1 bar	21-300 mbar	3,2 kg	12	4750 ₺	
FRG 50	MM.01.26.02	DN 50 (2")	192 x 233	1 bar	21-300 mbar	3,2 kg	12	5000 ₺	



FRG + SSV							BAĞLANTI: DIŞLI		
ÜRÜN	SERİ NU	BOYUT	UZUNLUK GENİŞLİK(mm)	Pmax	Pout	AĞIRLIK	KOLİ ADEDİ	FİYAT	
FRG-SSV 15	MM.01.21.01	DN 15 (1/2")	236 x 122	1 bar	21-300 mbar	1,7 kg	27	2500 ₺	
FRG-SSV 20	MM.01.22.01	DN 20 (3/4")	256 x 148	1 bar	21-300 mbar	1,8 kg	27	2500 ₺	
FRG-SSV 25	MM.01.23.01	DN 25 (1")	256 x 148	1 bar	21-300 mbar	1,8 kg	27	2500 ₺	
FRG-SSV 32	MM.01.24.01	DN 32 (1 1/4")	295 x 233	1 bar	21-300 mbar	3,6 kg	12	5000 ₺	
FRG-SSV 40	MM.01.25.01	DN 40 (1 1/2")	295 x 233	1 bar	21-300 mbar	3,5 kg	12	5000 ₺	
FRG-SSV 50	MM.01.26.01	DN 50 (2")	295 x 233	1 bar	21-300 mbar	3,5 kg	12	5250 ₺	



FRG							BAĞLANTI: FLANŞLI		
ÜRÜN	SERİ NU	BOYUT	UZUNLUK GENİŞLİK(mm)	Pmax	Pout	AĞIRLIK	KOLİ ADEDİ	FİYAT	
FRG 65	MM.01.51.02	DN 65 (2 1/2")	380 x 333	0,5 bar	21-300 mbar	12,5 kg	1	18500 ₺	
FRG 80	MM.01.52.02	DN 80 (3")	380 x 333	0,5 bar	21-300 mbar	11 kg	1	18750 ₺	
FRG 100	MM.01.53.02	DN 100 (4")	380 x 333	0,5 bar	21-300 mbar	12 kg	1	21500 ₺	


EKV - EMNİYET KAPATMA VANASI

ÜRÜN	SERİ NO	BOYUT	BAĞLANTI	AĞIRLIK	KOLİ ADEDİ	FİYAT
EKV 15	MM.05.04.02	DN 15 (1/2")	DIŞLI	0,4 kg	60	4400 ₺
EKV 20	MM.05.05.02	DN 20 (3/4")	DIŞLI	0,4 kg	60	4400 ₺
EKV 25	MM.05.06.02	DN 25 (1")	DIŞLI	0,4 kg	60	4400 ₺

EKV - EMNİYET KAPATMA VANASI

ÜRÜN	SERİ NO	BOYUT	BAĞLANTI	AĞIRLIK	KOLİ ADEDİ	FİYAT
EKV 32	MM.05.07.02	DN 32 (1 1/4")	DIŞLI	2,5 kg	12	5400 ₺
EKV 40	MM.05.08.02	DN 40 (1 1/2")	DIŞLI	2,5 €	12	5400 ₺
EKV 50	MM.05.09.02	DN 50 (2")	DIŞLI	2,5 €	12	5500 ₺

EKV - SAFETY SHUT-OFF VALVE

ÜRÜN	SERİ NO	BOYUT	BAĞLANTI	AĞIRLIK	KOLİ ADEDİ	FİYAT
EKV 65	MM.05.10.01	DN 65 (2 1/2")	FLANŞLI	7,3 kg	1	8250 ₺
EKV 80	MM.05.11.01	DN 80 (3")	FLANŞLI	7 kg	1	10500 ₺
EKV 100	MM.05.12.01	DN 100 (4")	FLANŞLI	7 kg	1	12250 ₺

MDV - CL 800 PASLANMAZ VANA

ÜRÜN	SERİ NO	BOYUT	BAĞLANTI	AĞIRLIK	KOLİ ADEDİ	FİYAT
MDV-2	MM.14.10	DN 15 (1/2")	DIŞLI (NPT)	0,5 kg	1	112,50 €

MDV - CL 800 PASLANMAZ VANA

ÜRÜN	SERİ NO	BOYUT	BAĞLANTI	AĞIRLIK	KOLİ ADEDİ	FİYAT
MDV-3	MM.14.20	DN 15 (1/2")	DIŞLI (NPT)	0,8 kg	1	137,50 €

ÇİFT KADEMELİ SERVİS REGÜLATÖRLERİ



TARGAZ



8



CSR						BAĞLANTI ÇAPI 3/4" - 1" x 1" - 1 1/4" - 1 1/2"	
ÜRÜN	SERİ NO	P _{max}	P _{out}	KAPASİTE	AĞIRLIK	FİYAT	
CSR 6-25	-	5 bar	21-150 mbar	6-25 m ³ /h	1,2 kg	92 €	
CSR 6-25	-	5 bar	150-300 mbar	6-25 m ³ /h	1,2 kg	92 €	
CSR 50	-	5 bar	21-150 mbar	50 m ³ /h	1,2 kg	115 €	
CSR 50	-	5 bar	150-300 mbar	50 m ³ /h	1,2 kg	115 €	



CEX						BAĞLANTI ÇAPI 1" x 1 1/2"	
ÜRÜN	SERİ NO	P _{max}	P _{out}	KAPASİTE	AĞIRLIK	FİYAT	
CEX 75	-	5 bar	21-150 mbar	75 m ³ /h	2,3 kg	150 €	
CEX 75	-	5 bar	150-300 mbar	75 m ³ /h	2,3 kg	150 €	
CEX 100	-	5 bar	21-150 mbar	100 m ³ /h	2,3 kg	165 €	
CEX 100	-	5 bar	150-300 mbar	100 m ³ /h	2,3 kg	175 €	



MODEL	BAĞLANTI ÇAPI		MAX GİRİŞ BASINCI							UZUNLUK-YÜKSEKLİK-GENİŞLİK(mm)		AĞIRLIK	FİYAT
	DİŞLİ - DN25(1") x DN25(1")		20 BAR							165 x 207 x 110			
CAKA 25 HP		P_{set}	0,5	1	2	4	6	10	12	16	19		
A	MM.08.10.Y12	50 mbar	50	80	120	250	280	440	520	550	550	2 kg	300 €
	MM.08.10.Y13	100 mbar	50	80	120	250	280	440	520	550	550		
	MM.08.10.Y14	150 mbar	50	80	120	250	280	440	520	550	550		
MP	MM.08.10.Y20	300 mbar	50	80	110	235	260	415	480	500	500	2 kg	300 €
	MM.08.10.Y31	500 mbar	-	80	110	235	260	415	480	500	500	2 kg	360 €
TR	MM.08.10.Y32	1 bar	-	-	110	235	260	460	500	500	500		
	MM.08.10.Y33	2 bar	-	-	-	235	295	460	500	500	500		
	MM.08.10.Y34	4 bar	-	-	-	-	295	460	500	500	500		

KAPASİTE TABLOSU (lsm³/h)



MODEL	BAĞLANTI ÇAPI		MAX GİRİŞ BASINCI							UZUNLUK-YÜKSEKLİK-GENİŞLİK(mm)		AĞIRLIK	FİYAT
	DİŞLİ - DN25(1") x DN40(1 1/2")		20 BAR							180 x 370 x 180			
CAKA 25 S		P_{set}	0,5	1	2	4	6	10	12	16	19		
A	MM.08.11.Y11	21 mbar	125	200	280	380	-	-	-	-	-	4,5 kg	420 €
	MM.08.11.Y12	50 mbar	125	200	280	380	-	-	-	-	-		
	MM.08.11.Y13	100 mbar	125	200	280	380	420	-	-	-	-		
	MM.08.11.Y14	150 mbar	125	200	280	380	420	450	-	-	-		
MP	MM.08.11.Y20	300 mbar	140	235	320	450	500	550	-	-	-	4,5 kg	420 €
TR	MM.08.11.Y31	500 mbar	-	200	280	350	420	450	500	-	-	4,5 kg	500 €
	MM.08.11.Y32	1 bar	-	-	250	350	420	450	500	600	-		

KAPASİTE TABLOSU (lsm³/h)



MODEL	BAĞLANTI ÇAPI		MAX GİRİŞ BASINCI							UZUNLUK-YÜKSEKLİK-GENİŞLİK(mm)		AĞIRLIK	FİYAT
	DİŞLİ - DN25(1") x DN40(1 1/2")		20 BAR							220 x 370 x 267			
CAKA 25		P_{set}	0,5	1	2	4	6	10	12	16	19		
MP	MM.08.12.Y20	300 mbar	180	280	325	525	700	700	700	700	700	10 kg	450 €
TR	MM.08.12.Y31	500 mbar	-	250	325	525	700	700	700	700	700	10 kg	500 €
	MM.08.12.Y32	1 bar	-	-	275	475	625	700	700	700	700		
	MM.08.12.Y33	2 bar	-	-	-	400	550	675	700	700	700		
	MM.08.12.Y34	4 bar	-	-	-	-	500	675	725	725	725		

KAPASİTE TABLOSU (lsm³/h)

CAKA - YÜKSEK BASINÇ REGÜLATÖRÜ



TARGAZ



10



MODEL	BAĞLANTI ÇAPI	MAX GİRİŞ BASINCI		UZUNLUK - YÜKSEKLİK - GENİŞLİK(mm)						AĞIRLIK	FİYAT	
		DİŞLİ - DN 40(1 1/2") x DN 40(1 1/2")	20 BAR	220 x 536 x 220								
CAKA 40 S (C600) DİŞLİ	P _{in} P _{out}	0,5	1	2	4	6	10	12	16	19	16 kg	550 €
		A	MM.08.24.Y12	50 mbar	400	600	750	1200	1500	1750		
	MM.08.24.Y13	100 mbar	400	600	750	1200	1500	1750	1750	1750		
	MM.08.24.Y14	150 mbar	400	600	750	1200	1500	1750	1750	1750		
MP	MM.08.24.Y20	300 mbar	350	620	750	1200	1500	1700	1700	1700	16 kg	550 €
TR	MM.08.24.Y31	500 mbar	-	580	780	1300	1600	1800	1800	1800	13 kg	650 €
	MM.08.24.Y32	1 bar	-	-	780	1350	1650	1850	1850	1850		
	MM.08.24.Y33	2 bar	-	-	-	1400	1700	1900	1900	1900		
	MM.08.24.Y34	4 bar	-	-	-	-	1700	1950	1950	1950		

KAPASİTE TABLOSU (Stm³/h)



MODEL	BAĞLANTI ÇAPI	MAX GİRİŞ BASINCI		UZUNLUK - YÜKSEKLİK - GENİŞLİK(mm)						AĞIRLIK	FİYAT	
		DİŞLİ - DN 50(2") x DN 50(2")	20 BAR	220 x 536 x 220								
CAKA 50 S (C600) DİŞLİ	P _{in} P _{out}	0,5	1	2	4	6	10	12	16	19	16 kg	700 €
		A	MM.08.32.Y12	50 mbar	480	720	900	1400	1800	2100		
	MM.08.32.Y13	100 mbar	480	720	900	1400	1800	2100	2100	2100		
	MM.08.32.Y14	150 mbar	480	720	900	1400	1800	2100	2100	2100		
MP	MM.08.32.Y20	300 mbar	420	720	900	1400	1800	2000	2000	2000	16 kg	700 €
TR	MM.08.32.Y31	500 mbar	-	700	930	1300	1900	2150	2150	2150	13 kg	950 €
	MM.08.32.Y32	1 bar	-	-	930	1550	1980	2200	2500	2500		
	MM.08.32.Y33	2 bar	-	-	-	1650	2500	2900	3000	3000		
	MM.08.32.Y34	4 bar	-	-	-	-	2500	3250	3500	3500		

KAPASİTE TABLOSU (Stm³/h)



MODEL	BAĞLANTI ÇAPI		MAX GİRİŞ BASINCI		UZUNLUK - YÜKSEKLİK - GENİŞLİK(mm)						AĞIRLIK	FİYAT
	FLANŞLI DN 25(1") x DN 25(1")		20 BAR		220 x 370 x 267							
CAKA 25	P_{out} / P_{in}	0,5	1	2	4	6	10	12	16	19	10 kg	500 €
	MP	MM.08.13.Y20	300 mbar	180	280	325	525	700	700	700		
TR	MM.08.13.Y31	500 mbar	-	250	325	525	700	700	700	700		
	MM.08.13.Y32	1 bar	-	-	275	475	625	700	700	700		
	MM.08.13.Y33	2 bar	-	-	-	400	550	675	700	700		
	MM.08.13.Y34	4 bar	-	-	-	-	500	675	725	725		

 KAPASİTE TABLOSU (Stm³/h)


MODEL	BAĞLANTI ÇAPI		BAĞLANTI TİPİ		MAX GİRİŞ BASINCI		UZUNLUK-YÜKSEKLİK-GENİŞLİK(mm)				AĞIRLIK	FİYAT
	FLANŞLI - DN 40(1 1/2") x DN 40(1 1/2")		FN 16 - ANSI 150		20 BAR		345 x 533 x 345					
CAKA 40 S (C600) FLANŞLI	P_{out} / P_{in}	0,5	1	2	4	6	10	12	16	19	20 kg	1.000 €
	A	MM.08.22.Y12	50 mbar	400	600	750	1200	1500	1750	1750		
MM.08.22.Y13		100 mbar	400	600	750	1200	1500	1750	1750	1750		
MM.08.22.Y14		150 mbar	400	600	750	1200	1500	1750	1750	1750		
MP	MM.08.22.Y20	300 mbar	350	620	750	1200	1500	1700	1700	1700		
TR	MM.08.22.Y31	500 mbar	-	580	780	1300	1600	1800	1800	1800	21,5 kg	1.000 €
	MM.08.22.Y32	1 bar	-	-	780	1350	1650	1850	1850	1850		
	MM.08.22.Y33	2 bar	-	-	-	1400	1700	1900	1900	1900		
	MM.08.22.Y34	4 bar	-	-	-	-	1700	1950	1950	1950		

 KAPASİTE TABLOSU (Stm³/h)


MODEL	BAĞLANTI ÇAPI		BAĞLANTI TİPİ		MAX GİRİŞ BASINCI		UZUNLUK-YÜKSEKLİK-GENİŞLİK(mm)				AĞIRLIK	FİYAT
	FLANŞLI - DN 50(2") x DN 50(2")		FN 16 - ANSI 150		20 BAR		345 x 533 x 345					
CAKA 50 S (C600) FLANŞLI	P_{out} / P_{in}	0,5	1	2	4	6	10	12	16	19	20 kg	1.100 €
	A	MM.08.31.Y12	50 mbar	480	720	900	1400	1800	2100	2100		
MM.08.31.Y13		100 mbar	480	720	900	1400	1800	2100	2100	2100		
MM.08.31.Y14		150 mbar	480	720	900	1400	1800	2100	2100	2100		
MP	MM.08.31.Y20	300 mbar	420	720	900	1400	1800	2000	2000	2000		
TR	MM.08.31.Y31	500 mbar	-	700	930	1300	1900	2150	2150	2150	18 kg	1.100 €
	MM.08.31.Y32	1 bar	-	-	930	1550	1980	2200	2500	2500		
	MM.08.31.Y33	2 bar	-	-	-	1650	2500	2900	3000	3000		
	MM.08.31.Y34	4 bar	-	-	-	-	2500	3250	3500	3500		

 KAPASİTE TABLOSU (Stm³/h)

CAKA - YÜKSEK BASINÇ REGÜLATÖRÜ



12



MODEL		BAĞLANTI ÇAPI	BAĞLANTI TİPİ		MAX GİRİŞ BASINCI		UZUNLUK - YÜKSEKLİK - GENİŞLİK(mm)					AĞIRLIK	FİYAT
CAKA 40		FLANŞLI - DN 40(1 1/2")	PN 16 - ANSI 150		20 BAR		345 x 423 x 370						
		$\frac{P_s}{P_{set}}$	0,5	1	2	4	6	10	12	16	19		
A	MM.08.20.Y12	50 mbar	400	650	750	1200	1700	1700	1700	1700	1700	20 kg	900 €
	MM.08.20.Y13	100 mbar	400	650	750	1200	1700	1700	1700	1700	1700		
	MM.08.20.Y14	150 mbar	400	650	750	1200	1700	1700	1700	1700	1700		
MP	MM.08.20.Y20	300 mbar	300	700	850	1450	1800	1800	1800	1800	1800	21 kg	900 €
TR	MM.08.20.Y31	500 mbar	-	600	850	1450	1800	1800	1800	1800	1800	21,5 kg	1000 €
	MM.08.20.Y32	1 bar	-	-	750	1450	2000	2250	2250	2250	2250		
	MM.08.20.Y33	2 bar	-	-	-	1450	2000	2400	2400	2400	2400		
	MM.08.20.Y34	4 bar	-	-	-	-	2000	2600	3000	3000	3000		

KAPASİTE TABLOSU (Stm²/h)



MODEL		BAĞLANTI ÇAPI	BAĞLANTI TİPİ		MAX GİRİŞ BASINCI		UZUNLUK - YÜKSEKLİK - GENİŞLİK(mm)					AĞIRLIK	FİYAT
CAKA 50		FLANŞLI - DN 50(2")	PN 16 - ANSI 150		20 BAR		345 x 496 x 400						
		$\frac{P_s}{P_{set}}$	0,5	1	2	4	6	10	12	16	19		
A	MM.08.30.Y12	50 mbar	600	975	1125	1800	2550	2550	2550	2550	2550	42 kg	1850 €
	MM.08.30.Y13	100 mbar	600	975	1125	1800	2550	2550	2550	2550	2550		
	MM.08.30.Y14	150 mbar	600	975	1125	1800	2550	2550	2550	2550	2550		
MP	MM.08.30.Y20	300 mbar	450	1100	1275	2200	2700	2700	2700	2700	2700	42 kg	1850 €
TR	MM.08.30.Y31	500 mbar	-	900	1275	2200	2700	2700	2700	2700	2700	42 kg	2250 €
	MM.08.30.Y32	1 bar	-	-	1125	2550	3250	3800	3800	3800	3800		
	MM.08.30.Y33	2 bar	-	-	-	2550	3250	4000	4000	4000	4000		
	MM.08.30.Y34	4 bar	-	-	-	-	3250	4500	5000	5000	5000		

KAPASİTE TABLOSU (Stm²/h)



MODEL	BAĞLANTI ÇAPİ	BAĞLANTI TİPİ	MAX GİRİŞ BASINCI		UZUNLUK - YÜKSEKLİK - GENİŞLİK(mm)					AĞIRLIK	FİYAT	
CAKA 80	FLANGED DN 80(3")	PN 16 - ANSI 150	20 BAR		345 x 640 x 412							
	P_{out} / P_{in}	0,5	1	2	4	6	10	12	16	19		
A	MM.08.40.Y11	21 mbar	2200	2900	4100	5950	6500	6750	6750	6750	55 kg	2900 €
	MM.08.40.Y12	50 mbar	2200	2900	4100	5950	6500	6750	6750	6750		
	MM.08.40.Y13	100 mbar	2200	2900	4100	5950	6500	6750	6750	6750		
	MM.08.40.Y14	150 mbar	1750	3050	4500	6750	7750	8100	8100	8100		
MP	MM.08.40.Y20	300 mbar	1750	3050	4500	6750	7750	8100	8100	8100	55 kg	2900 €
TR	MM.08.40.Y31	500 mbar	-	2700	4000	6750	8800	9950	9950	9950	55 kg	2900 €
	MM.08.40.Y32	1 bar	-	-	3000	6500	8800	9950	9950	9950		
	MM.08.40.Y33	2 bar	-	-	-	5500	9850	11800	12500	15100		
	MM.08.40.Y34	4 bar	-	-	-	-	8500	12750	14100	15100		

KAPASİTE TABLOSU (Stm³/h)



MODEL	BAĞLANTI ÇAPİ	BAĞLANTI TİPİ	MAX GİRİŞ BASINCI		UZUNLUK - YÜKSEKLİK - GENİŞLİK(mm)					AĞIRLIK	FİYAT	
CAKA 100	FLANGED DN 100(4")	PN 16 - ANSI 150	20 BAR		455 x 665 x 458							
	P_{out} / P_{in}	0,5	1	2	4	6	10	12	16	19		
A	MM.08.50.Y11	21 mbar	2970	3910	5530	8030	8770	9110	9110	9110	65 kg	4700 €
	MM.08.50.Y12	50 mbar	2970	3910	5530	8030	8770	9110	9110	9110		
	MM.08.50.Y13	100 mbar	2970	3910	5530	8030	8770	9110	9110	9110		
	MM.08.50.Y14	150 mbar	2350	4110	6070	8950	10460	10530	10530	10530		
MP	MM.08.50.Y20	300 mbar	2350	4110	6070	8950	10460	10530	10530	10530	65 kg	4700 €
TR	MM.08.50.Y31	500 mbar	-	3640	5400	8950	11880	13430	13430	13430	65 kg	4700 €
	MM.08.50.Y32	1 bar	-	-	4050	8770	11880	13430	13430	13430		
	MM.08.50.Y33	2 bar	-	-	-	7420	13290	15930	16870	20380		
	MM.08.50.Y34	4 bar	-	-	-	-	11470	17210	19030	20380		

KAPASİTE TABLOSU (Stm³/h)

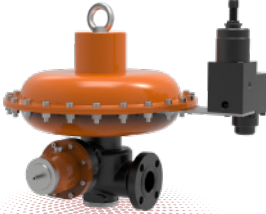
CAKA PL - YÜKSEK BASINÇ REGÜLATÖRÜ



TARGAZ



14



MODEL	BAĞLANTI TİPİ	BAĞLANTI	MAX GİRİŞ BASINCI		
CAKA 25 PL	PN 16 - ANSI 150 - ANSI 300	FLANŞLI	50 BAR		
PN 16 = MM.08.14.P00 ANSI 150 = MM.08.15.P00 ANSI 300 = MM.08.16.P00	BOYUT	C _g	UZUNLUK - YÜKSEKLİK - GENİŞLİK(mm)	AĞIRLIK	FİYAT
DN 25 (1")	450	454 x 380 x 345	20 kg	3100 €	

AKIŞ KATSAYISI (C_g)



MODEL	BAĞLANTI TİPİ	BAĞLANTI	MAX GİRİŞ BASINCI		
CAKA 40 PL	PN 16 - ANSI 150	FLANŞLI	25 BAR		
PN 16 = MM.08.20.P00 ANSI 150 = MM.08.21.P00	BOYUT	C _g	UZUNLUK - YÜKSEKLİK - GENİŞLİK(mm)	AĞIRLIK	FİYAT
DN 40 (1 1/2")	950	454 x 400 x 345	26 kg	3400 €	

AKIŞ KATSAYISI (C_g)



MODEL	BAĞLANTI TİPİ	BAĞLANTI	MAX GİRİŞ BASINCI		
CAKA 50 PL	PN 16 - ANSI 150 - ANSI 300	FLANŞLI	50 BAR		
PN 16 = MM.08.30.P00 ANSI 150 = MM.08.30.P00 ANSI 300 = MM.08.33.P00	BOYUT	C _g	UZUNLUK - YÜKSEKLİK - GENİŞLİK(mm)	AĞIRLIK	FİYAT
DN 50 (2")	1900	454 x 600 x 345	46 kg	4000 €	

AKIŞ KATSAYISI (C_g)



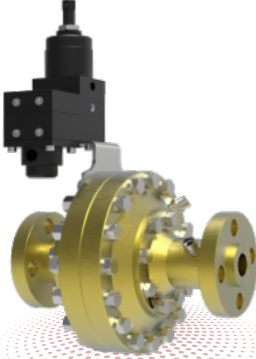
MODEL	BAĞLANTI TİPİ	BAĞLANTI	MAX GİRİŞ BASINCI	
CAKA 80 PL	PN 16 - ANSI 150	FLANŞLI	25 BAR	
BOYUT	C _g	UZUNLUK - YÜKSEKLİK - GENİŞLİK(mm)	AĞIRLIK	FİYAT
DN 80 (3")	4500	454 x 627 x 345	65 kg	4800 €

AKIŞ KATSAYISI (C_g)



MODEL	BAĞLANTI TİPİ	BAĞLANTI	MAX GİRİŞ BASINCI	
CAKA 100 PL	PN 16 - ANSI 150	FLANŞLI	25 BAR	
BOYUT	C _g	UZUNLUK - YÜKSEKLİK - GENİŞLİK(mm)	AĞIRLIK	FİYAT
DN 100 (4")	6200	570 x 537 x 455	75 kg	5000 €

AKIŞ KATSAYISI (C_g)

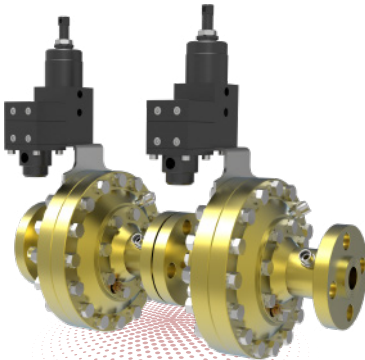


MODEL	BAĞLANTI TİPİ		BAĞLANTI		MAX GİRİŞ BASINCI	
	ANSI 150		FLANŞLI		25 BAR	
CAKA XL CL 150	BOYUT	C ₉	UZUNLUK - YÜKSEKLİK - GENİŞLİK(mm)		AĞIRLIK	FİYAT
MM.09.11.P00	DN 25 (1")	525	210 x 225		25 kg	2640 €
MM.09.21.P00	DN 40 (1 1/2")	1350	251 x 365		45 kg	2800 €
MM.09.31.P00	DN 50 (2")	2200	286 x 287		60 kg	3360 €
MM.09.41.P00	DN 80 (3")	5100	337 x 400		85 kg	3740 €
MM.09.51.P00	DN 100 (4")	8200	-		90 kg	ASK FOR PRICE
MM.09.61.P00	DN 150 (6")	20000	-		-	ASK FOR PRICE

AKIŞ KATSAYISI (C₉)

MODEL	BAĞLANTI TİPİ		BAĞLANTI		MAX GİRİŞ BASINCI	
	ANSI 300 - ANSI 600		FLANŞLI		100 BAR	
CAKA XL CL 300-600	BOYUT	C ₉	UZUNLUK - YÜKSEKLİK - GENİŞLİK(mm)		AĞIRLIK	FİYAT
MM.09.11.P00	DN 25 (1")	525	210 x 225		25 kg	4000 €
MM.09.21.P00	DN 40 (1 1/2")	1350	251 x 365		45 kg	4500 €
MM.09.31.P00	DN 50 (2")	2200	286 x 287		60 kg	5000 €
MM.09.41.P00	DN 80 (3")	5100	337 x 400		85 kg	5600 €
MM.09.51.P00	DN 100 (4")	8200	-		90 kg	ASK FOR PRICE
MM.09.61.P00	DN 150 (6")	20000	-		-	ASK FOR PRICE

AKIŞ KATSAYISI (C₉)

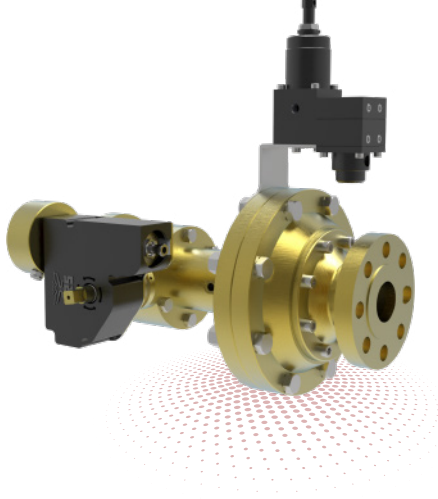


MODEL	BAĞLANTI TİPİ		BAĞLANTI		MAX GİRİŞ BASINCI	
	ANSI 150		FLANŞLI		25 BAR	
CAKA MXL CL 150	BOYUT	C ₉	UZUNLUK - YÜKSEKLİK - GENİŞLİK(mm)		AĞIRLIK	FİYAT
MM.09.13.P00	DN 25 (1")	450	385 x 225		50 kg	5000 €
MM.09.23.P00	DN 40 (1 1/2")	1150	450 x 365		90 kg	5500 €
MM.09.33.P00	DN 50 (2")	1950	535 x 287		110 kg	6500 €
MM.09.43.P00	DN 80 (3")	4600	600 x 400		150 kg	7250 €
MM.09.53.P00	DN 100 (4")	6900	-		155 kg	ASK FOR PRICE
MM.09.63.P00	DN 150 (6")	16500	-		-	ASK FOR PRICE

AKIŞ KATSAYISI (C₉)

MODEL	BAĞLANTI TİPİ		BAĞLANTI		MAX GİRİŞ BASINCI	
	ANSI 300 - ANSI 600		FLANŞLI		100 BAR	
CAKA MXL CL 300-600	BOYUT	C ₉	UZUNLUK - YÜKSEKLİK - GENİŞLİK(mm)		AĞIRLIK	FİYAT
MM.09.13.P00	DN 25 (1")	450	385 x 225		50 kg	7500 €
MM.09.23.P00	DN 40 (1 1/2")	1150	450 x 365		90 kg	8750 €
MM.09.33.P00	DN 50 (2")	1950	535 x 287		110 kg	9750 €
MM.09.43.P00	DN 80 (3")	4600	600 x 400		150 kg	10600 €
MM.09.53.P00	DN 100 (4")	6900	-		155 kg	ASK FOR PRICE
MM.09.63.P00	DN 150 (6")	16500	-		-	ASK FOR PRICE

AKIŞ KATSAYISI (C₉)

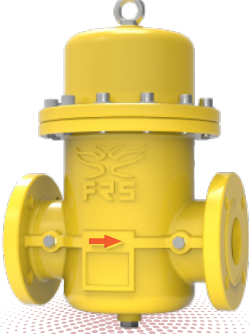


MODEL	BAĞLANTI TİPİ	BAĞLANTI	MAX GİRİŞ BASINCI		
CAKA BXL CL 150	ANSI 150	FLANŞLI	25 BAR		
	BOYUT	C _g	UZUNLUK - YÜKSEKLİK - GENİŞLİK(mm)	AĞIRLIK	FİYAT
MM.09.12.P00	DN 25 (1")	500	390 x 225	50 kg	3300 €
MM.09.22.P00	DN 40 (1 1/2")	1100	440 x 365	75 kg	3600 €
MM.09.32.P00	DN 50 (2")	1900	535 x 287	90 kg	4200 €
MM.09.42.P00	DN 80 (3")	4000	600 x 400	130 kg	4700 €
MM.09.52.P00	DN 100 (4")	6500	-	135 kg	FİYAT SORUNUZ
MM.09.62.P00	DN 150 (6")	16000	-	-	FİYAT SORUNUZ

AKIŞ KATSAYISI (C_g)

MODEL	BAĞLANTI TİPİ	BAĞLANTI	MAX INLET PRESSURE		
CAKA BXL CL 300-600	ANSI 300 - ANSI 600	FLANŞLI	100 BAR		
	BOYUT	C _g	UZUNLUK - YÜKSEKLİK - GENİŞLİK(mm)	AĞIRLIK	FİYAT
MM.09.12.P00	DN 25 (1")	500	390 x 225	50 kg	5000 €
MM.09.22.P00	DN 40 (1 1/2")	1100	440 x 365	75 kg	5600 €
MM.09.32.P00	DN 50 (2")	1900	535 x 287	90 kg	6250 €
MM.09.42.P00	DN 80 (3")	4000	600 x 400	130 kg	7000 €
MM.09.52.P00	DN 100 (4")	6500	-	135 kg	FİYAT SORUNUZ
MM.09.62.P00	DN 150 (6")	16000	-	-	FİYAT SORUNUZ

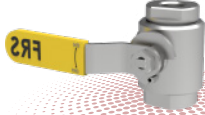
AKIŞ KATSAYISI (C_g)



FLR-D DÖKÜM FİLTRE							PN 16 - ANSI 150
ÜRÜN	SERİ NO	BOYUT	KARTUŞ TİPİ	FİLTASYON (µ)	FİLTASYON ALANI (m ²)	AĞIRLIK	FİYAT
FLR-D 25	MM.07.10	DN 25	G 0.5	2-5-10	0,06	13 kg	310 €
FLR-D 32	MM.07.11	DN 32	G 0.5	2-5-10	0,06	15 kg	320 €
FLR-D 40	MM.07.12	DN 40	G 0.5	2-5-10	0,06	16 kg	330 €
FLR-D 50	MM.07.13	DN 50	G 0.5	2-5-10	0,06	17 kg	340 €
FLR-D 65	MM.07.14	DN 65	G 1,5	2-5-10	0,23	42 kg	660 €
FLR-D 80	MM.07.15	DN 80	G 1,5	2-5-10	0,23	45 kg	675 €
FLR-D 100	MM.07.16	DN 100	G 1,5	2-5-10	0,23	50 kg	690 €

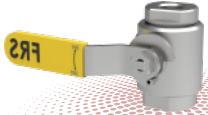


FF SERİSİ ÇELİK FİLTRE							PN 16 - ANSI 150
ÜRÜN	SERİ NO	BOYUT	KARTUŞ TİPİ	FİLTASYON (µ)	AĞIRLIK	FİYAT	
FF/A 20	-	DN 20	G 0.5	2-5-10	20 kg	550 €	
FF/A 25	-	DN 25	G 0.5	2-5-10	22 kg	550 €	
FF/A 32	-	DN 32	G 0.5	2-5-10	22 kg	565 €	
FF/A 40	-	DN 40	G 0.5	2-5-10	23 kg	565 €	
FF/A 50	-	DN 50	G 1	2-5-10	24 kg	580 €	
FF/A 65	-	DN 65	G 1	2-5-10	26 kg	675 €	
FF/A 80	-	DN 80	G 1,5	2-5-10	35 kg	1.150 €	
FF/A 100	-	DN 100	G 2	2-5-10	75 kg	1.320 €	
FF/A 125	-	DN 125	G 2,5	2-5-10	88 kg	4.400 €	
FF/A 150	-	DN 150	G 2,5	2-5-10	125 kg	4.500 €	
FF/A 150	-	DN 150	G 3	2-5-10	220 kg	4.800 €	
FF/A 200	-	DN 200	G 3	2-5-10	330 kg	7.000 €	



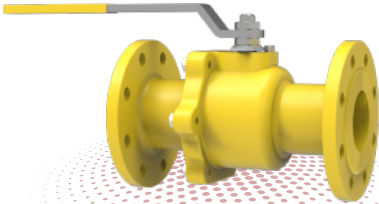
CL 800 ÇELİK KÜRESEL VANA

ÜRÜN	SERİ NO	BOYUT	BAĞLANTI	AĞIRLIK	FİYAT
DN 8	MM.13.01.02.02	DN 8 (1/4")	Dişli	0,2 kg	900 ₺
DN 15	MM.13.02.02.02	DN 15 (1/2")	Dişli	0,8 kg	1600 ₺
DN 25	MM.13.03.02.02	DN 25 (1")	Dişli	1,5 kg	2300 ₺
DN 50	MM.13.06.02.02	DN 50 (2")	Dişli	6 kg	FİYAT SORUNUZ



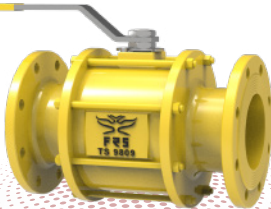
CL 800 - CL 1500 DIŞLI PASLANMAZ ÇELİK KÜRESEL VANA

ÜRÜN	SERİ NO	BOYUT	BAĞLANTI	AĞIRLIK	FİYAT
DN 8	MM.13.01.03.02	DN 8 (1/4")	Dişli	0,2 kg	40 €
DN 15	MM.13.02.03.02	DN 15 (1/2")	Dişli	0,8 kg	60 €
DN 25	MM.13.03.03.02	DN 25 (1")	Dişli	1,5 kg	95 €
DN 50	MM.13.06.03.02	DN 50 (2")	Dişli	6 kg	FİYAT SORUNUZ



FLANŞLI KÜRESEL VANALAR

ÜRÜN	SERİ NO	BOYUT	BAĞLANTI	AĞIRLIK	FİYAT
DN 25	MM.13.03.01.02	DN 25 (1")	FLANŞLI	4 kg	2040 ₺
DN 32	MM.13.04.01.02	DN 32 (1 1/4")	FLANŞLI	5 kg	2520 ₺
DN 40	MM.13.05.01.02	DN 40 (1 1/2")	FLANŞLI	6 kg	3750 ₺
DN 50	MM.13.06.01.02	DN 50 (2")	FLANŞLI	10 kg	4290 ₺
DN 65	MM.13.07.01.02	DN 65 (2 1/2")	FLANŞLI	13 kg	6750 ₺
DN 80	MM.13.08.01.02	DN 80 (3")	FLANŞLI	17 kg	9150 ₺
DN 100	MM.13.09.01.02	DN 100 (4")	FLANŞLI	26 kg	13455 ₺



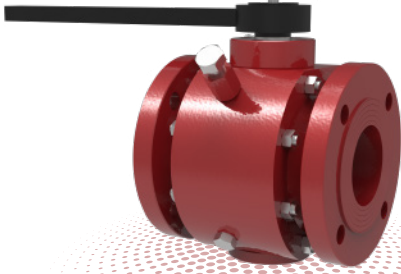
FLANŞLI KÜRESEL VANALAR

ÜRÜN	SERİ NO	BOYUT	BAĞLANTI	AĞIRLIK	FİYAT
DN 150	MM.13.10.01.02	DN 150 (6")	FLANŞLI	58 kg	27150 ₺
DN 200	MM.13.11.01.02	DN 200 (8")	FLANŞLI	127 kg	57500 ₺
DN 250	MM.13.12.01.02	DN 250 (10")	FLANŞLI	175 kg	137500 ₺
DN 300	MM.13.13.01.02	DN 300 (12")	FLANŞLI	-	300000 ₺

GEARBOX DAHİL

GEARBOX DAHİL

! GEARBOX EKLENTİ FİYATI: 5000 ₺
(Gearbox fiyatı net olup indirim uygulanmayacaktır.)



TİP = BKV - FL - TG

TASARI = API 6D / ISO 14313

ÇALIŞMA SICAKLIĞI = -30 / +70

ANSI SINIFI = 150 / 300 / 600

API VANA				
ÜRÜN	SERİ NO	BOYUT	BAĞLANTI	FİYAT
DN 50	-	DN 50 (2")	FLANŞLI/KAYNAKLI	FİYAT SORUNUZ
DN 65	-	DN 65 (2 1/2")	FLANŞLI/KAYNAKLI	FİYAT SORUNUZ
DN 80	-	DN 80 (3")	FLANŞLI/KAYNAKLI	FİYAT SORUNUZ
DN 100	-	DN 100 (4")	FLANŞLI/KAYNAKLI	FİYAT SORUNUZ
DN 125	-	DN 125 (5")	FLANŞLI/KAYNAKLI	FİYAT SORUNUZ
DN 150	-	DN 150 (6")	FLANŞLI/KAYNAKLI	FİYAT SORUNUZ
DN 200	-	DN 200 (8")	FLANŞLI/KAYNAKLI	FİYAT SORUNUZ



ETH-M RELIEF

ÜRÜN	SERİ NO	BOYUT	BAĞLANTI	SET BASINCI	AĞIRLIK	FİYAT
ETH-M 25	MM.06.11	DN 25 (1")	Dişli	21-1000 mbar	0,6 kg	2500 ₺



ETH RELIEF

ÜRÜN	SERİ NO	BOYUT	BAĞLANTI	SET BASINCI	AĞIRLIK	FİYAT
ETH 25	MM.06.12	DN 25 (1")	Dişli	21-1000 mbar	1,5 kg	2500 ₺



ETV-M RELIEF

ÜRÜN	SERİ NO	BOYUT	BAĞLANTI	SET BASINCI	AĞIRLIK	FİYAT
ETV-M 25	MM.06.20	DN 25 (1")	Dişli	2-6 bar	3,2 kg	220 €



ETA RELIEF

ÜRÜN	SERİ NO	BOYUT	BAĞLANTI	SET BASINCI	AĞIRLIK	FİYAT
ETA 25	MM.06.30	DN 25 (1")	Dişli	4-40 bar	1,6 kg	300 €



MODEL	BAĞLANTI ÇAPİ	MAX GİRİŞ BASINCI	ÇALIŞMA SICAKLIĞI					AĞIRLIK	FİYAT
CNG 15	DN 15(1/2") x DN 15(1/2") NPT	250 BAR	-30°C / +60°C						
	$\frac{p_{in}(bar)}{p_{out}(bar)}$	25	50	100	150	200			
MM.12.10.00	5-40	300	400	450	500	550			

KAPASİTE TABLOSU (Stm³/h)

MODEL	BAĞLANTI ÇAPİ	MAX GİRİŞ BASINCI	ÇALIŞMA SICAKLIĞI					AĞIRLIK	FİYAT
CNG 25	DN25(1") x DN25(1") NPT	250 BAR	-30°C / +60°C						
	$\frac{p_{in}(bar)}{p_{out}(bar)}$	25	50	100	150	200			
MM.12.20.00	5-40	700	1000	1250	1500	2000			

KAPASİTE TABLOSU (Stm³/h)

MODEL	BAĞLANTI ÇAPİ	MAX GİRİŞ BASINCI	ÇALIŞMA SICAKLIĞI					AĞIRLIK	FİYAT
CNG 40	DN40(1 1/2") x DN40(1 1/2") NPT	250 BAR	-30°C / +60°C						
	$\frac{p_{in}(bar)}{p_{out}(bar)}$	25	50	100	150	200			
MM.12.30.00	5-40	900	1300	1600	2000	2600			

KAPASİTE TABLOSU (Stm³/h)

Giriş-Çıkış Manometresi

PRICE: 10 € / Adet

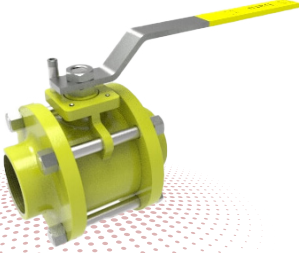
Giriş-Çıkış Bağlantı Rekoru

PRICE: 25 € / Adet

Yedek Sinter Filtresi

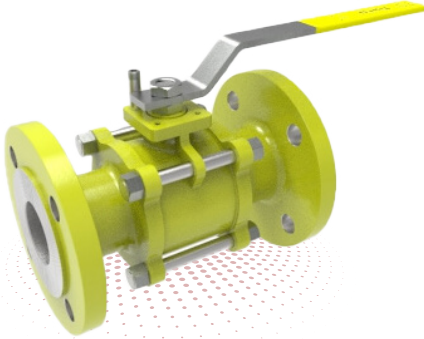
PRICE: 35 € / Adet

! CNG Regülatörü devreye alınırken regülatör giriş basıncı kontrollü bir şekilde yavaş yavaş artırılmalıdır.
CNG Regülatörünün filtresi ihtiyaca göre düzenli aralıklarla temizlenmelidir.



BATU - DIŞLI ÇELİK SFERO DÖKÜM KÜRESEL VANALAR

ÜRÜN	BOYUT	BAĞLANTI	BASINÇ	FİYAT
DN 15	DN 15 (1/2")	DIŞLI	MOP 5-20	1265 ₺
DN 20	DN 20 (3/4")	DIŞLI	MOP 5-20	1409 ₺
DN 25	DN 25 (1")	DIŞLI	MOP 5-20	1710 ₺
DN 32	DN 32 (1 1/4")	DIŞLI	MOP 5-20	2423 ₺
DN 40	DN 40 (1 1/2")	DIŞLI	MOP 5-20	2855 ₺
DN 50	DN 50 (2")	DIŞLI	MOP 5-20	3771 ₺



BATU - FLANŞLI KÜRESEL VANALAR

ÜRÜN	BOYUT	BAĞLANTI	BASINÇ	FİYAT
DN 15	DN 15 (1/2")	FLANŞLI	PN 16	1841 ₺
DN 20	DN 20 (3/4")	FLANŞLI	PN 16	2271 ₺
DN 25	DN 25 (1")	FLANŞLI	PN 16	2614 ₺
DN 32	DN 32 (1 1/4")	FLANŞLI	PN 16	3475 ₺
DN 40	DN 40 (1 1/2")	FLANŞLI	PN 16	3965 ₺
DN 50	DN 50 (2")	FLANŞLI	PN 16	4990 ₺
DN 65	DN 65 (2 1/2")	FLANŞLI	PN 16	6698 ₺
DN 80	DN 80 (3")	FLANŞLI	PN 16	9504 ₺
DN 100	DN 100 (4")	FLANŞLI	PN 16	13068 ₺
DN 125	DN 125 (5")	FLANŞLI	PN 16	22112 ₺
DN 150	DN 150 (6")	FLANŞLI	PN 16	37305 ₺
DN 200	DN 200 (8")	FLANŞLI	PN 16	60327 ₺

**KALDE - DİŐLİ PİRİNÇ DOĐALGAZ VANALARI (TSE EN331)**

ÜRÜN	BOYUT	BAĐLANTI	BASINÇ	FİYAT
DN 15	DN 15 (1/2")	THREADED	MOP 0.5-5	80,55 ₺
DN 20	DN 20 (3/4")	THREADED	MOP 0.5-5	122,24 ₺
DN 25	DN 25 (1")	THREADED	MOP 0.5-5	218,92 ₺
DN 32	DN 32 (1 1/4")	THREADED	MOP 0.5-5	363,84 ₺
DN 40	DN 40 (1 1/2")	THREADED	MOP 0.5-5	544,52 ₺
DN 50	DN 50 (2")	THREADED	MOP 0.5-5	800,88 ₺



MONOBLOCK YALITIM CONTASI

ÜRÜN	BOYUT	BAĞLANTI	BASINÇ	FİYAT
DN 25	DN 25 (1")	DIŞLİ	ANSI 150	98 €
DN 32	DN 32 (1 1/4")	DIŞLİ	ANSI 150	154 €
DN 40	DN 40 (1 1/2")	DIŞLİ	ANSI 150	163 €
DN 50	DN 50 (2")	DIŞLİ	ANSI 150	173 €
DN 65	DN 65 (2 1/2")	DIŞLİ	ANSI 150	220 €
DN 80	DN 80 (3")	DIŞLİ	ANSI 150	280 €
DN 100	DN 100 (4")	DIŞLİ	ANSI 150	400 €
DN 150	DN 150 (6")	DIŞLİ	ANSI 150	733 €
DN 200	DN 200 (8")	DIŞLİ	ANSI 150	1.105 €
DN 250	DN 250 (10")	DIŞLİ	ANSI 150	2.046 €
DN 300	DN 300 (12")	DIŞLİ	ANSI 150	2.558 €



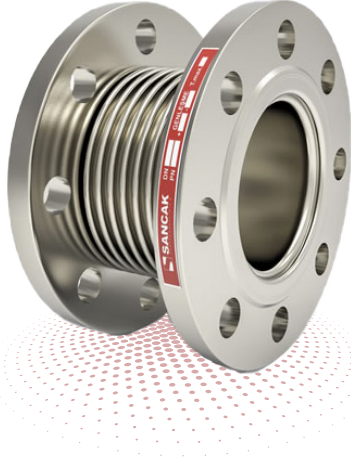
İZOLE MAFSALLAR (BOMBELİ)

ÜRÜN	BOYUT	BAĞLANTI	BASINÇ	FİYAT
DN 25	DN 25 (1")	DIŞLİ	PN 10	230 ₺
DN 32	DN 32 (1 1/4")	DIŞLİ	PN 10	320 ₺
DN 40	DN 40 (1 1/2")	DIŞLİ	PN 10	365 ₺
DN 50	DN 50 (2")	DIŞLİ	PN 10	510 ₺
DN 65	DN 65 (2 1/2")	DIŞLİ	PN 10	750 ₺
DN 80	DN 80 (3")	DIŞLİ	PN 10	1300 ₺
DN 100	DN 100 (4")	DIŞLİ	PN 10	3350 ₺

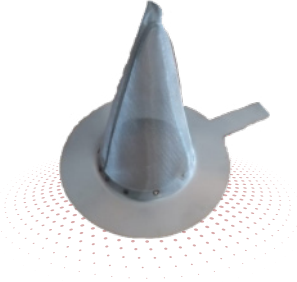


İZOLE MAFSALLAR (REKORLU)

ÜRÜN	BOYUT	BAĞLANTI	BASINÇ	FİYAT
DN 25	DN 25 (1")	PN 10	25	230 ₺
DN 32	DN 32 (1 1/4")	PN 10	20	320 ₺
DN 40	DN 40 (1 1/2")	PN 10	15	365 ₺
DN 50	DN 50 (2")	PN 10	10	510 ₺
DN 65	DN 65 (2 1/2")	PN 10	5	750 ₺
DN 80	DN 80 (3")	PN 10	4	1300 ₺
DN 100	DN 100 (4")	PN 10	-	3350 ₺



SANCAK - 30MM FLANŞLI KOMPANSATÖR				
ÜRÜN	BOYUT	BAĞLANTI	BASINÇ	FİYAT
DN 25	DN 25 (1")	FLANŞLI	PN 16	1149 ₺
DN 32	DN 32 (1 1/4")	FLANŞLI	PN 16	1173 ₺
DN 40	DN 40 (1 1/2")	FLANŞLI	PN 16	1281 ₺
DN 50	DN 50 (2")	FLANŞLI	PN 16	1619 ₺
DN 65	DN 65 (2 1/2")	FLANŞLI	PN 16	2008 ₺
DN 80	DN 80 (3")	FLANŞLI	PN 16	2486 ₺
DN 100	DN 100 (4")	FLANŞLI	PN 16	3225 ₺
DN 125	DN 125 (5")	FLANŞLI	PN 16	4100 ₺
DN 150	DN 150 (5")	FLANŞLI	PN 16	4928 ₺
DN 200	DN 200 (8")	FLANŞLI	PN 16	8185 ₺
DN 250	DN 250 (10")	FLANŞLI	PN 16	FİYAT SORUNUZ



KONİK FİLTRE		
ÜRÜN	BOYUT	FİYAT
DN 40	DN 40 (1 1/2")	330 ₺
DN 50	DN 50 (2")	455 ₺
DN 65	DN 65 (2 1/2")	700 ₺
DN 80	DN 80 (3")	1400 ₺
DN 100	DN 100 (4")	3605 ₺
DN 125	DN 125 (5")	3605 ₺



MANOMETRELER		
ÜRÜN	BOYUT	FİYAT
0-100 mbar	Ø 63	540 ₺
0-600 mbar	Ø 63	260 ₺
-	FARKLI ÇAPLAR İÇİN	FİYAT SORUNUZ



FRS/SAFEGAS GAZ ALARM CİHAZI

PRICE

480 ₺

FRS/SAFEGAS GAZ ALARM CİHAZI EXPROOF

PRICE

750 ₺



SİSMİK SİSCUT - GAZ ALARM CİHAZI-TEK ÇIKIŞLI 12V

PRICE

₺ 270

SİSMİK SİSLİFT - GAZ ALARM CİHAZI-TEK ÇIKIŞLI 12V/220V

PRICE

₺ 285

SİSMİK NOFİRE - GAZ ALARM CİHAZI

PRICE

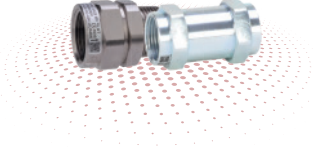
ASK FOR PRICE



HONEYWELL/HEMAN - CO KARBONMANOMETRE CİHAZI

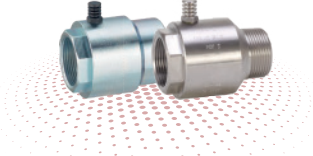
PRICE

ASK FOR PRICE



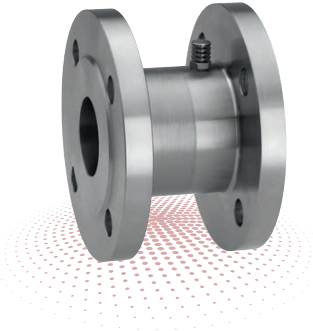
TAS 21 - TERMAL DOĞALGAZ VANASI

ÜRÜN	BOYUT	BAĞLANTI	BASINÇ	FİYAT
DN 20	DN 20 (3/4")	DIŞLİ	MOP 5-20	25 €
DN 25	DN 20 (1")	DIŞLİ	MOP 5-20	35 €



TAS 22 - TERMAL DOĞALGAZ VANASI

ÜRÜN	BOYUT	BAĞLANTI	BASINÇ	FİYAT
DN 32	DN 32 (1 1/4")	DIŞLİ	MOP 5-20	180 €
DN 40	DN 40 (1 1/2")	DIŞLİ	MOP 5-20	200 €
DN 50	DN 50 (2")	DIŞLİ	MOP 5-20	265 €



TAS 23 - THERMAL NATURAL GAS VALVE

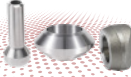
ÜRÜN	BOYUT	BAĞLANTI	BASINÇ	FİYAT
DN 65	DN 65 (2 1/2")	DIŞLİ	MOP 5-20	1.600 €
DN 80	DN 80 (3")	DIŞLİ	MOP 5-20	1.920 €
DN 100	DN 100 (4")	DIŞLİ	MOP 5-20	3.200 €



MAGNEZYUM ANOT 2LB.

FİYAT

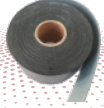
FİYAT SORUNUZ



WELDOLET, THREDOLET, NİPOLET - 1/2"

FİYAT

FİYAT SORUNUZ



WELDOLET, THREDOLET, NİPOLET - 1"

FİYAT

FİYAT SORUNUZ



SICAK VE SOĞUK SARMA BANTI

FİYAT

FİYAT SORUNUZ



SIZDIRMAZLIK ÜRÜNLERİ

FİYAT

FİYAT SORUNUZ



ÇELİK FİLTRE KARTUŞU

FİYAT

FİYAT SORUNUZ



REGÜLATÖR YEDEK KİTLERİ

FİYAT

FİYAT SORUNUZ



SOLENOİD BOBİN VE SOKETLER

FİYAT

FİYAT SORUNUZ



DOĞALGAZ FLEXLERİ

FİYAT

FİYAT SORUNUZ

TOPRAK ÇUBUĞU

FİYAT

FİYAT SORUNUZ

CNG GAZ HORTUMU

FİYAT

FİYAT SORUNUZ



Kale Kalıp

G4 DOĞALGAZ SAYACI - SETSİZ

FIYAT

50 €



elster
American Meter

G6 KÖRÜKLÜ DOĞALGAZ SAYACI - SETLİ

FIYAT

185 €

G10 KÖRÜKLÜ DOĞALGAZ SAYACI - SETLİ

FIYAT

510 €

G16 KÖRÜKLÜ DOĞALGAZ SAYACI - SETLİ

FIYAT

525 €

G25 KÖRÜKLÜ DOĞALGAZ SAYACI - SETLİ

FIYAT

850 €

 Pietro Fiorentini



FIorentini - ROTARYMETRE

ÜRÜN	BOYUT	BAĞLANTI	BASINÇ	FİYAT
G-25	DN 40 (1 1/2")	FLANŞLI	PN 16 / ANSI 150	1.454 €
G-40	DN 50 (2")	FLANŞLI	PN 16 / ANSI 150	1.511 €
G-65	DN 50 (2")	FLANŞLI	PN 16 / ANSI 150	1.638 €
G-100	DN 80 (3")	FLANŞLI	PN 16 / ANSI 150	1.927 €
G-160	DN 80 (3")	FLANŞLI	PN 16 / ANSI 150	2.383 €
G-250	DN 100 (4")	FLANŞLI	PN 16 / ANSI 150	3.286 €
G-400	DN 100 (4")	FLANŞLI	PN 16 / ANSI 150	6.012 €
G-400	DN 150 (6")	FLANŞLI	PN 16 / ANSI 150	6.295 €
G-650	DN 150 (6")	FLANŞLI	PN 16 / ANSI 150	7.308 €

 elster
American Meter



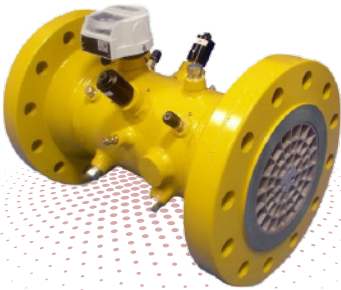
ELSTER - ROTARYMETRE

ÜRÜN	BOYUT	BAĞLANTI	BASINÇ	FİYAT
G-40	DN 50 (2")	FLANŞLI	PN 16 / ANSI 150	1530 €
G-65	DN 50 (2")	FLANŞLI	PN 16 / ANSI 150	1640 €
G-100	DN 80 (3")	FLANŞLI	PN 16 / ANSI 150	2010 €
G-160	DN 80 (3")	FLANŞLI	PN 16 / ANSI 150	2660 €
G-160	DN 100 (4")	FLANŞLI	PN 16 / ANSI 150	2900 €
G-250	DN 80 (3")	FLANŞLI	PN 16 / ANSI 150	3400 €
G-250	DN 100 (4")	FLANŞLI	PN 16 / ANSI 150	3400 €
G-400	DN 100 (4")	FLANŞLI	PN 16 / ANSI 150	5400 €
G-400	DN 150 (6")	FLANŞLI	PN 16 / ANSI 150	5830 €
G-650	DN 150 (6")	FLANŞLI	PN 16 / ANSI 150	13800 €

Pietro Fiorentini



elster
American Meter



PIETRO FIORENTINI - TÜRÜNMETRE

ÜRÜN	BOYUT	BAĞLANTI	BASINÇ	FİYAT
G-40	DN 50 (2")	FLANŞLI	PN 16 / ANSI 150	1.979 €
G-65	DN 50 (2")	FLANŞLI	PN 16 / ANSI 150	1.979 €
G-100	DN 50 (2")	FLANŞLI	PN 16 / ANSI 150	1.979 €
G-100	DN 80 (3")	FLANŞLI	PN 16 / ANSI 150	2.552 €
G-160	DN 80 (3")	FLANŞLI	PN 16 / ANSI 150	2.375 €
G-250	DN 80 (3")	FLANŞLI	PN 16 / ANSI 150	2.375 €
G-400	DN 80 (3")	FLANŞLI	PN 16 / ANSI 150	2.552 €
G-160	DN 100 (4")	FLANŞLI	PN 16 / ANSI 150	2.814 €
G-250	DN 100 (4")	FLANŞLI	PN 16 / ANSI 150	2.814 €
G-400	DN 100 (4")	FLANŞLI	PN 16 / ANSI 150	2.814 €
G-650	DN 100 (4")	FLANŞLI	PN 16 / ANSI 150	3.326 €
G-400	DN 150 (6")	FLANŞLI	PN 16 / ANSI 150	4.282 €
G-650	DN 150 (6")	FLANŞLI	PN 16 / ANSI 150	4.282 €
G-1000	DN 150 (6")	FLANŞLI	PN 16 / ANSI 150	4.282 €
G-1600	DN 150 (6")	FLANŞLI	PN 16 / ANSI 150	4.376 €

ELSTER - TÜRÜNMETRE

ÜRÜN	BOYUT	BAĞLANTI	BASINÇ	FİYAT
G-65	DN 50 (2")	FLANŞLI	PN 16 / ANSI 150	2640 €
G-100	DN 80 (3")	FLANŞLI	PN 16 / ANSI 150	2720 €
G-160	DN 80 (3")	FLANŞLI	PN 16 / ANSI 150	2760 €
G-250	DN 80 (3")	FLANŞLI	PN 16 / ANSI 150	3240 €
G-160	DN 100 (4")	FLANŞLI	PN 16 / ANSI 150	3700 €
G-250	DN 100 (4")	FLANŞLI	PN 16 / ANSI 150	4000 €
G-400	DN 100 (4")	FLANŞLI	PN 16 / ANSI 150	4060 €
G-400	DN 150 (6")	FLANŞLI	PN 16 / ANSI 150	5500 €
G-650	DN 150 (6")	FLANŞLI	PN 16 / ANSI 150	6300 €
G-1000	DN 150 (6")	FLANŞLI	PN 16 / ANSI 150	6500 €




PIETRO FIORENTINI - QUANTOMETRE				
ÜRÜN	BOYUT	BAĞLANTI	BASINÇ	FİYAT
G-40	DN 50 (2")	FLANŞLI	PN 16 / ANSI 150	1.625 €
G-65	DN 50 (2")	FLANŞLI	PN 16 / ANSI 150	1.625 €
G-100	DN 50 (2")	FLANŞLI	PN 16 / ANSI 150	1.625 €
G-100	DN 80 (3")	FLANŞLI	PN 16 / ANSI 150	1.813 €
G-160	DN 80 (3")	FLANŞLI	PN 16 / ANSI 150	1.813 €
G-250	DN 80 (3")	FLANŞLI	PN 16 / ANSI 150	1.813 €
G-400	DN 80 (3")	FLANŞLI	PN 16 / ANSI 150	1.813 €
G-160	DN 100 (4")	FLANŞLI	PN 16 / ANSI 150	2.314 €
G-250	DN 100 (4")	FLANŞLI	PN 16 / ANSI 150	2.314 €
G-400	DN 100 (4")	FLANŞLI	PN 16 / ANSI 150	2.314 €
G-650	DN 100 (4")	FLANŞLI	PN 16 / ANSI 150	2.314 €



ELSTER - QUANTOMETRE				
ÜRÜN	BOYUT	BAĞLANTI	BASINÇ	FİYAT
QA10	DN 25 (1")	FLANŞLI	PN 4	1020 €
QA16	DN 25 (1")	FLANŞLI	PN 4	1140 €
QA25	DN 25 (1")	FLANŞLI	PN 4	1280 €
QA40	DN 25 (1")	FLANŞLI	PN 4	1470 €
QA40	DN 40 (1 1/2")	FLANŞLI	PN 4	1970 €
QA65	DN 50 (2")	FLANŞLI	PN 4	2320 €
QA100	DN 80 (3")	FLANŞLI	PN 4	2400 €
QA160	DN 80 (3")	FLANŞLI	PN 4	2560 €
QA250	DN 80 (3")	FLANŞLI	PN 4	2640 €
QA250	DN 100 (4")	FLANŞLI	PN 4	3100 €
QA400	DN 100 (4")	FLANŞLI	PN 4	3340 €
QA400	DN 150 (6")	FLANŞLI	PN 4	4000 €
QA650	DN 150 (6")	FLANŞLI	PN 4	4360 €
QA1000	DN 150 (6")	FLANŞLI	PN 4	4800 €

ELSTER - QUANTOMETRE				
ÜRÜN	BOYUT	BAĞLANTI	BASINÇ	FİYAT
QA10	DN 25 (1")	FLANŞLI	PN 16	1080 €
QA16	DN 25 (1")	FLANŞLI	PN 16	1240 €
QA25	DN 25 (1")	FLANŞLI	PN 16	1360 €
QA40	DN 25 (1")	FLANŞLI	PN 16	1570 €
QA40	DN 40 (1 1/2")	FLANŞLI	PN 16	2210 €
QA65	DN 50 (2")	FLANŞLI	PN 16	2470 €
QA100	DN 80 (3")	FLANŞLI	PN 16	2550 €
QA160	DN 80 (3")	FLANŞLI	PN 16	2700 €
QA250	DN 80 (3")	FLANŞLI	PN 16	2780 €
QA250	DN 100 (4")	FLANŞLI	PN 16	3300 €
QA400	DN 100 (4")	FLANŞLI	PN 16	3500 €
QA400	DN 150 (6")	FLANŞLI	PN 16	4300 €
QA650	DN 150 (6")	FLANŞLI	PN 16	4550 €
QA1000	DN 150 (6")	FLANŞLI	PN 16	4860 €

ELSTER - QUANTOMETRE				
ÜRÜN	BOYUT	BAĞLANTI	BASINÇ	FİYAT
Q65	DN 50 (2")	FLANŞLI	PN 10	1920 €
Q100	DN 80 (3")	FLANŞLI	PN 10	2160 €
Q160	DN 80 (3")	FLANŞLI	PN 10	2270 €
Q250	DN 80 (3")	FLANŞLI	PN 10	2400 €
Q250	DN 100 (4")	FLANŞLI	PN 10	2730 €
Q400	DN 100 (4")	FLANŞLI	PN 10	2850 €
Q400	DN 150 (6")	FLANŞLI	PN 10	4400 €
Q650	DN 150 (6")	FLANŞLI	PN 10	4470 €
Q1000	DN 150 (6")	FLANŞLI	PN 10	4700 €

ELSTER - QUANTOMETRE				
ÜRÜN	BOYUT	BAĞLANTI	BASINÇ	FİYAT
Q65	DN 50 (2")	FLANŞLI	PN 16 / ANSI 150	2100 €
Q100	DN 80 (3")	FLANŞLI	PN 16 / ANSI 150	2350 €
Q160	DN 80 (3")	FLANŞLI	PN 16 / ANSI 150	2500 €
Q250	DN 80 (3")	FLANŞLI	PN 16 / ANSI 150	2700 €
Q250	DN 100 (4")	FLANŞLI	PN 16 / ANSI 150	2920 €
Q400	DN 100 (4")	FLANŞLI	PN 16 / ANSI 150	3060 €
Q400	DN 150 (6")	FLANŞLI	PN 16 / ANSI 150	4650 €
Q650	DN 150 (6")	FLANŞLI	PN 16 / ANSI 150	4640 €
Q1000	DN 150 (6")	FLANŞLI	PN 16 / ANSI 150	4900 €



SİRKÜLASYON POMPALARI

FRS 3/40.2 365/280/210 380 V TRİFAZE DN 40

FİYAT

FİYAT SORUNUZ

FRS 3/50.2 926/770/516 380 V TRİFAZE DN 50

FİYAT

FİYAT SORUNUZ

FRS 3/65.2 1390/945/546 380 V TRİFAZE DN 65

FİYAT

FİYAT SORUNUZ

FRS 3/80.2 1360/950/670 380 V TRİFAZE DN 80

FİYAT

FİYAT SORUNUZ

FRS 25/6 33-44 WATT 220 V MONOFAZE DN 25

FİYAT

₺ 82,50

FRS 25/8 43-80 WATT 220 V MONOFAZE DN 25

FİYAT

₺ 110,00

FRS 32/8 57-94 WATT 220 V MONOFAZE DN 32

FİYAT

₺ 137,50

FREKANS İNVERTİRLÜ SİRKÜLASYON POMPALARI

FRS 4/4 85-550 WATT 220 V MONOFAZE DN 40

FİYAT

FİYAT SORUNUZ

FRS 4/12 150-710 WATT 220 V MONOFAZE DN 40

FİYAT

FİYAT SORUNUZ

FRS 5/8 245-970 WATT 220 V MONOFAZE DN 50

FİYAT

FİYAT SORUNUZ

FRS 5/12 285-1085 WATT 220 V MONOFAZE DN 50

FİYAT

FİYAT SORUNUZ

FRS 6/12 305-1100 WATT 220 V MONOFAZE DN 65

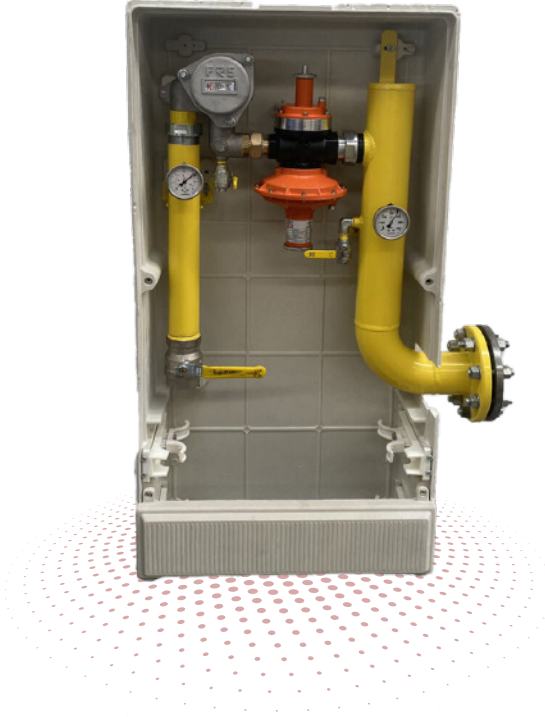
FİYAT

FİYAT SORUNUZ

FRS 8/12 485-1600 WATT 220 V MONOFAZE DN 80

FİYAT

FİYAT SORUNUZ

**S 300 SERVİS KUTUSU**

P max	P in	P out	Q max	FİYAT
6 BAR	1 BAR	300 MBAR	225 m ³ /h	FİYAT SORUNUZ



S 700 SERVİS KUTUSU

P max

4 BAR

P in

1-4 BAR

P out

21-300 MBAR

Q max

225 m³/h

FİYAT

FİYAT SORUNUZ

**SI1200**

P max	P in	P out	Q max	FİYAT
6 BAR	1-4 BAR	300 MBAR	400 m ³ /h	FİYAT SORUNUZ



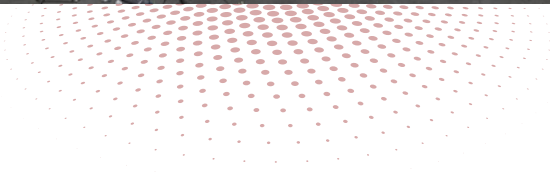
RMS-A				
P max	P in	P out	Q max	FİYAT
100 BAR	70 BAR	12 - 19 BAR	BİLGİ İSTEYİNİZ	FİYAT SORUNUZ



RMS				
P max	P in	P out	Q max	FİYAT
25 BAR	12-25 BAR	4 BAR	BİLGİ İSTİYİNİZ	FİYAT SORUNUZ



RMS-C				
P max	P in	P out	Q max	FİYAT
25 BAR	4 BAR	0-1 BAR	BİLGİ İSTEYİNİZ	FİYAT SORUNUZ



CNG				
P max	P in	P out	Q max	PRICE
250 BAR	250 BAR	4 BAR	BİLGİ İSTEYİNİZ	FİYAT SORUNUZ



EŐANJÖR

FİYAT

FİYAT SORUNUZ



MULTİSİKLOK FİLTRE

FIYAT

FIYAT SORUNUZ